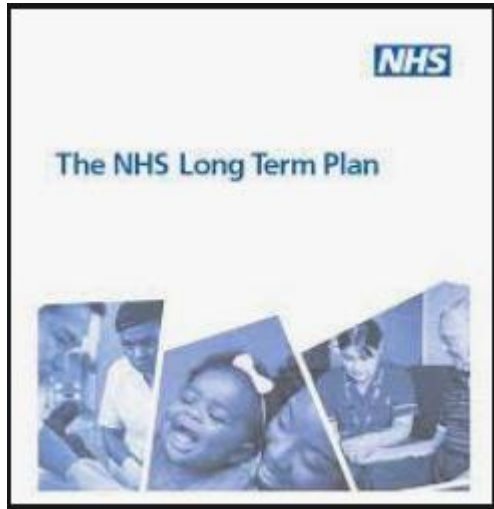


Impact of Advanced Practice

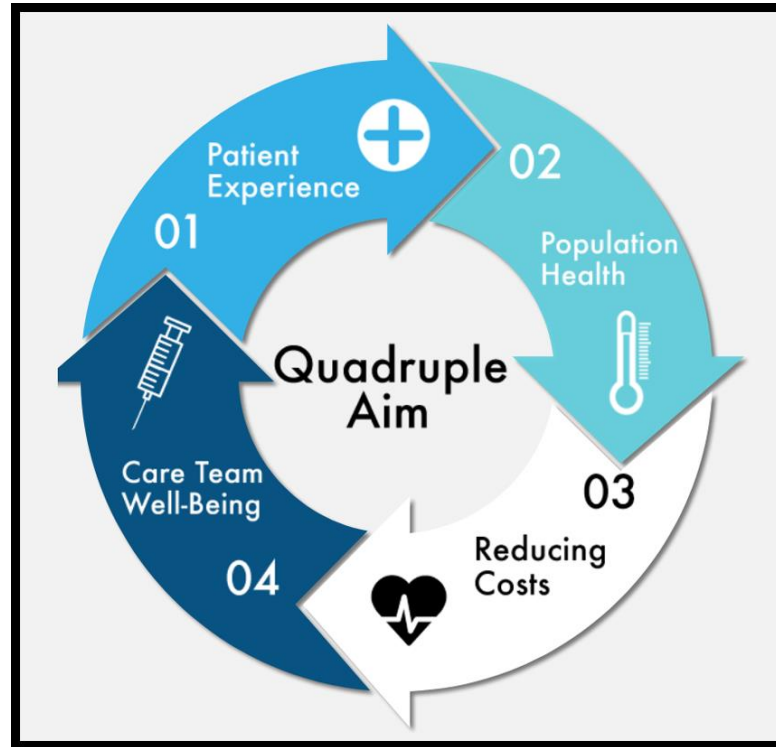


Lou Buckle, Luke Cunningham and Jennifer Lloyd

Advanced Practice - Why?



Advanced Practice - Aims



Advanced Practice – Where?

Established

- Emergency Medicine
- Surgery
- Critical Care
- Acute Medicine
(please note credential due 2022)
- Primary Care
- Neonatal

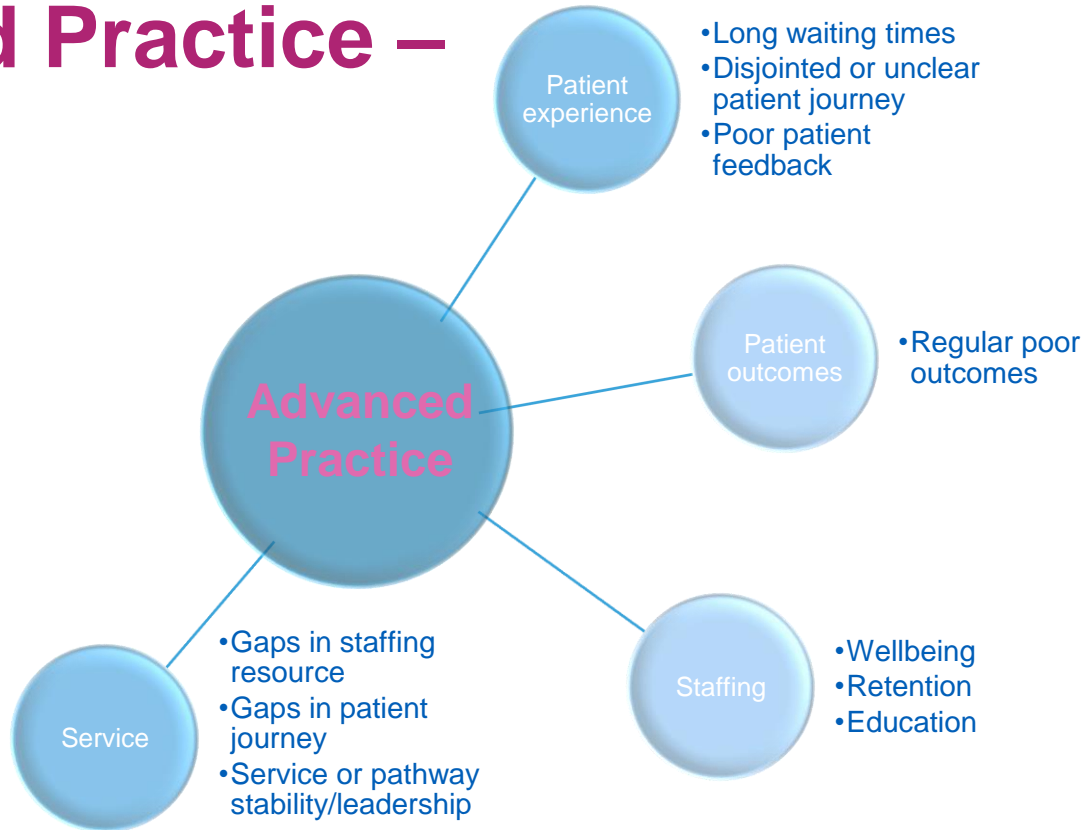
Emerging

- Mental Health
- Community Frailty
- Stroke and neuro rehab
- Musculoskeletal
- Oncology
- Paediatrics
- Urgent Care

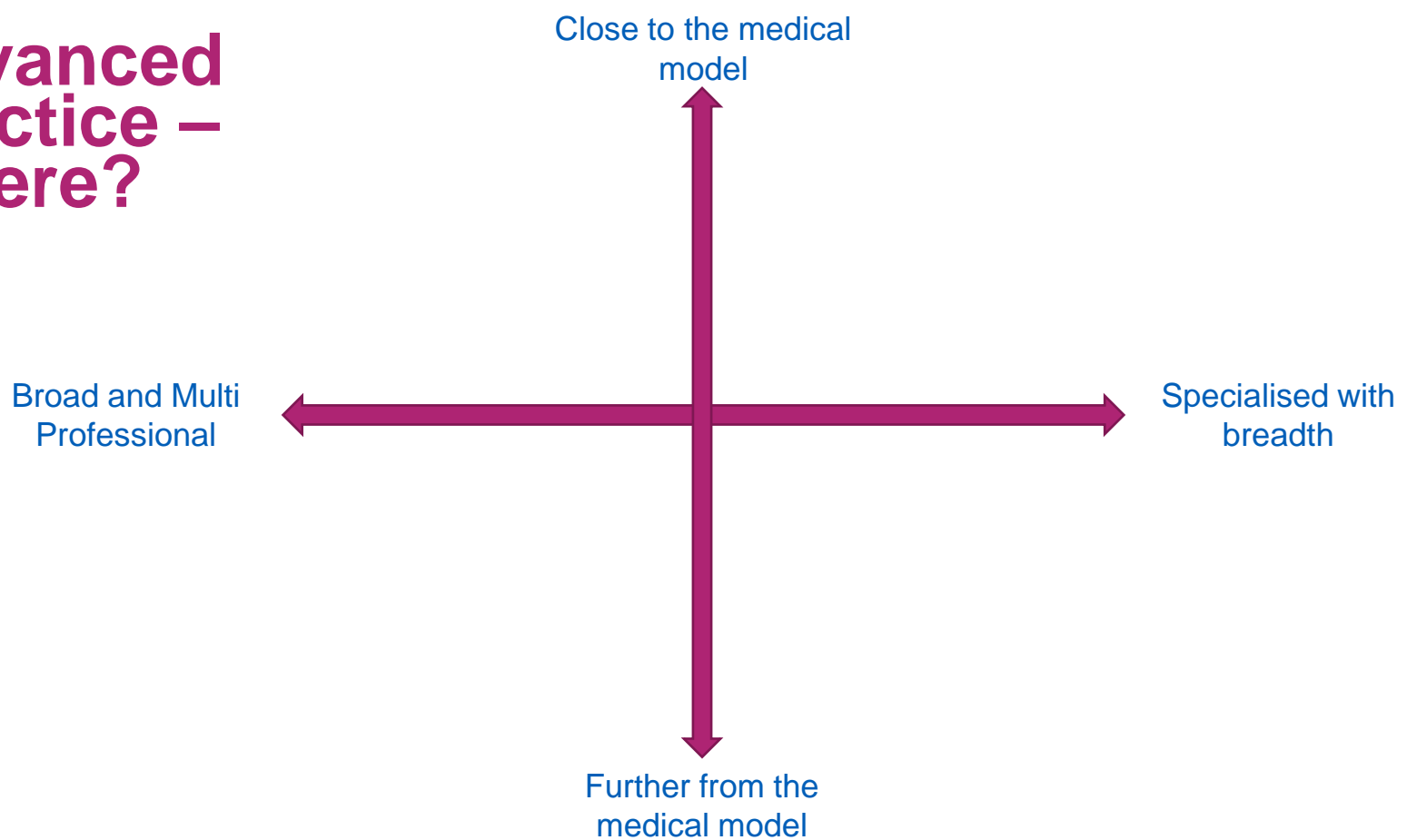
Potential

- Learning Disabilities and Autism
- Rehabilitation
- End of Life Care
- Maternity
- and any other areas that you identify could need AP as a solution

Advanced Practice – Where?



Advanced Practice – Where?



Advanced Practice – Who?



Advanced Practice – Who?



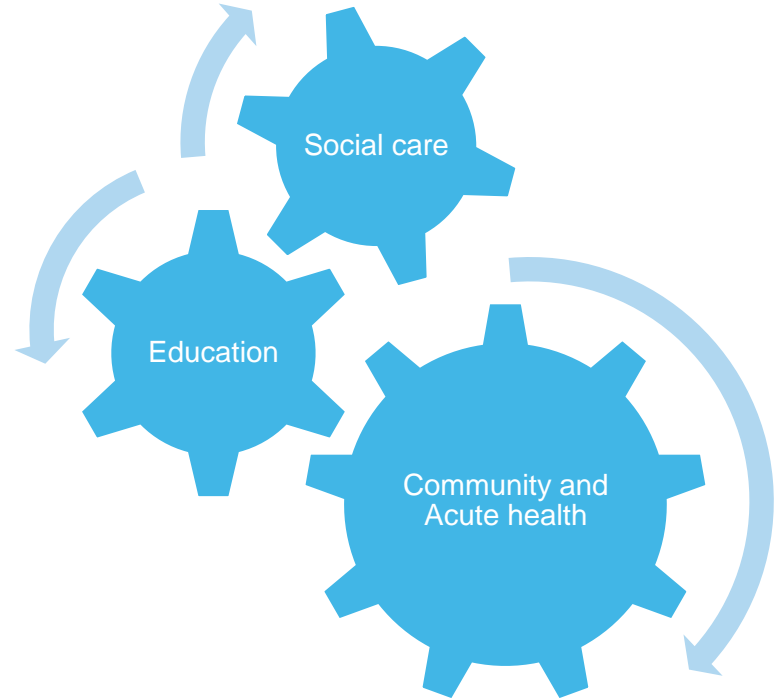
NHS NHS England and NHS Improvement

Same day emergency care:

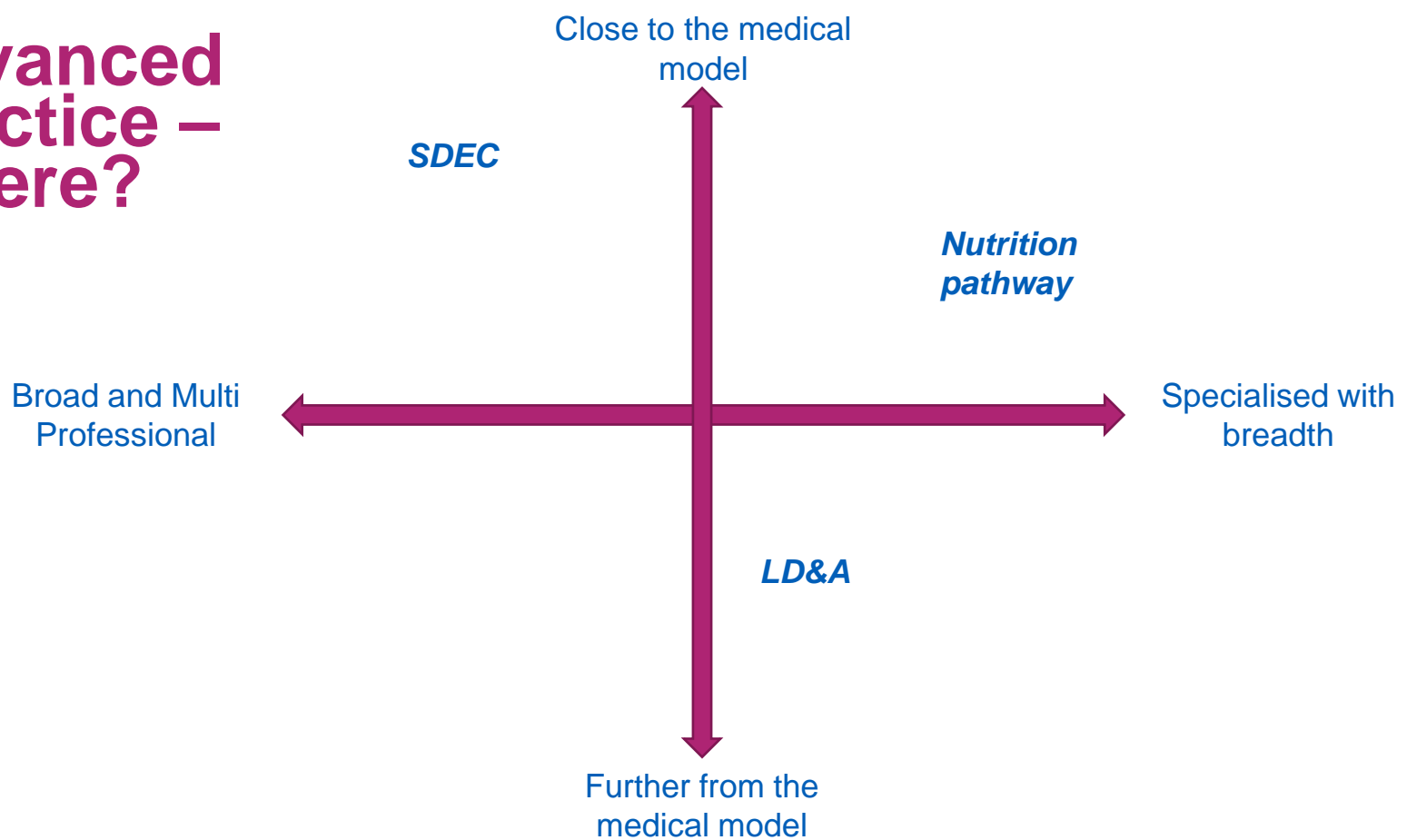
- Improves patient experience
- Reduces unnecessary hospital admissions
- Avoids unplanned, longer than necessary stays in hospital



Advanced Practice – Who?



Advanced Practice – Where?



Advanced Practice – Impact



Connecting

Lou Buckle



lou.buckle@hee.nhs.uk



@lbuckle01

Luke Cunningham



luke.cunningham@hee.nhs.uk



@lcunnin7

Jennifer Lloyd



Jennifer.lloyd@hee.nhs.uk



@JenniferL_SLT

