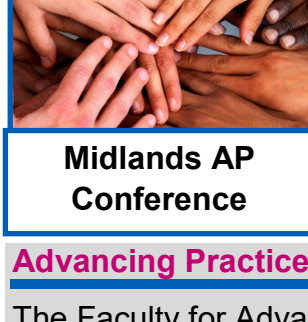
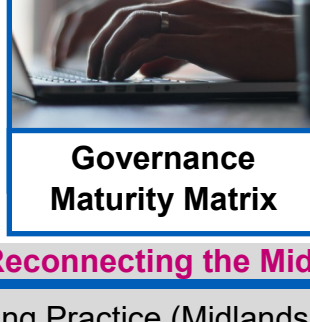


Faculty for Advancing Practice (Midlands) Update Bulletin



Midlands AP Conference



Governance Maturity Matrix



Minimum Standards for Supervision



Faculty Staffing Updates

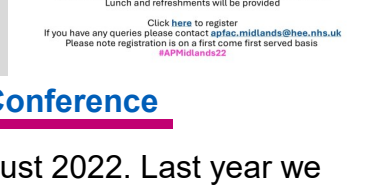
Advancing Practice: Reconnecting the Midlands Conference - Friday 16 September 2022

The Faculty for Advancing Practice (Midlands) is excited to announce that we will be hosting a face-to-face conference in partnership with the West Midlands Advanced Practice Forum on **Friday 16 September 2022** from 9am – 4pm

The programme includes a range of contemporary speakers and interactive sessions to enable discussion and debate around the issues that impact on advanced clinical practice. More information will follow soon.

In the run up to this event we are holding a poster competition for advanced clinical practitioner from the Midlands (qualified or trainee). Please submit your poster by the **Friday 5 August 2022** which can relate to any of the four pillars of advanced practice.

Further information can be found in the document attached to the email 'Poster Submission Guidance' - we look forward to seeing what you have been involved in!



Please note, registrations for the conference have now closed as we are at full capacity, presentations will be available on our website after the conference.

If you have any questions, please email apfac.midlands@hee.nhs.uk

Call for Abstracts for the National Centre for Advancing Practice Conference

The call for poster abstracts is now open and is due to close on 1st August 2022. Last year we had lots of posters submitted from across the 7 NHS regions – it would be good to see even more submitted from the Midlands for 2022. The maximum length of an abstract is 250 words, not including the title or list of authors.

Once received, your abstract will be reviewed and validated by the co-organisers. All research posters are peer-reviewed by a committee of experts. Poster reviews are single-blind: reviewers will see author names, but authors will not see reviewer names.

All approved abstracts will need to produce an electronic poster which will be made available fully online for participants. In addition, each poster will submit a 1-to-3-minute pitch presentation, to be screened alongside posters. More information about the format of the digital poster

apfac.midlands@hee.nhs.uk

www.hee.nhs.uk

We work with partners to plan, recruit, educate and train the health workforce.

and video will be provided by email once the abstract will be approved.

All approved abstracts will need to produce an electronic poster which will be made available fully online for participants. In addition, each poster will submit a 1-to-3-minute pitch presentation, to be screened alongside posters. More information about the format of the digital poster and video will be provided by email once the abstract will be approved.

This year's conference is looking to be even bigger with 3000 spaces, more research posters, and a wider range of speakers from across the advancing practice community.

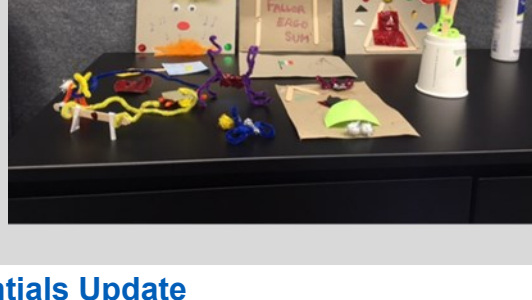
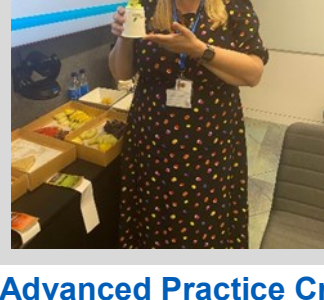
National conference Date: 7th November 2022 and 10th November 2022

The Centre for Advancing Practice

Midlands Faculty Team Away Day

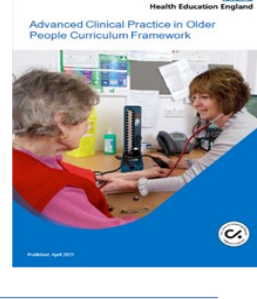
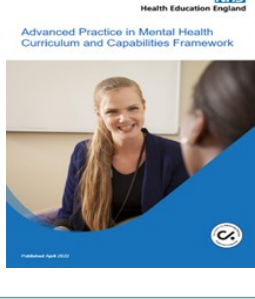
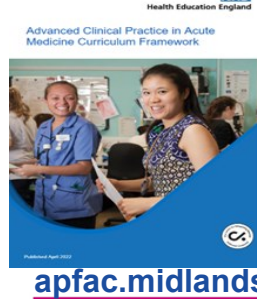
The Faculty had a team away day on Wednesday 11th May at HEE's new office at 23 Stephenson Street in Central Birmingham. This was the first time many of us had met in person due to the remote working prompted by the pandemic. It was great for everyone to get together, and we spent time reviewing the advanced practice priorities both regionally and nationally, and planning the coordination of the work of our Faculty's Advanced Practice Training Programme Directors (TPDs) across their range of speciality areas.

We did had a fun ice breaker activity competition, where we used craft materials to create something to tell others about ourselves. Our winner was TPD for urgent and emergency care, Jane Elwell, for her craft representation of her gardening hobby.



Advanced Practice Credentials Update

The Centre for Advancing Practice has recently released its Centre-endorsed credential specifications in the speciality areas of: [acute medicine](#); [mental health](#) and [older people](#) Other credential documents in a range of speciality areas are being finalised as Centre-endorsed credential specifications and will be released over the next few months, you can stay up to date [via this page](#). A credential's Centre-endorsed status means they have met the Centre's endorsement criteria, having gone through the Centre's process of independent review. It is anticipated that common modes of delivery for credentials will be either as modules / pathways within in MSC Advanced Clinical Practice programmes, or as stand-alone level 7 modules, or as discrete shorter academic programmes such as a Postgraduate Certificate (PG Cert).



apfac.midlands@hee.nhs.uk

www.hee.nhs.uk

We work with partners to plan, recruit, educate and train the health workforce.

Advanced Practice Governance Maturity Matrix Update

The Centre for Advancing Practice Governance Maturity Matrix, which looks at governance of advanced practice development and implementation in provider organisations has now been published. The maturity matrix is aimed to be utilised by those who either lead advanced practice or are influencing the advanced practice agenda within provider organisations, across all settings from acute care, mental health care, community care, to primary care.

The Matrix is divided into 8 domains in which organisations can self-assess their progress on governance of advanced practice against each domain, which will then indicate whether they are making either *early progress*, *substantial progress*, or are *mature* in the governance of advanced practice within their organisation.

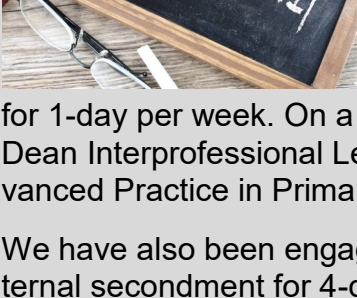
The Matrix can be accessed [here via the Centre's website](#) and there is also a webinar available to view.

Minimum Standards for Supervision

Health Education England's Centre for Advancing Practice has launched the *Advanced practice workplace supervision: Minimum standards for supervision* to offer guidance for supervisors, managers, employers, and trainee Advanced Practitioners. Used in conjunction with HEE's (2020) *Workplace Supervision for Advanced Clinical Practice* it provides further in depth, evidence-based information along with recommendations on how to develop quality supervision in the workplace. As the transition from experienced professional to trainee, and eventually qualified, Advanced Practitioner can require significant adjustment along with the development of new knowledge and skills, high quality supervision can be effective in supporting this.

It contains guidance on what good supervision should like, who should deliver and how often. There are also templates for an employer supervision action plan, supervisor readiness checklist and a readiness to become an advanced practitioner checklist. Webinars to be held in the near future, details of which we will share! Various resources can be accessed [here](#).

Changes in Regional and National Leadership for Advancing Practice



There are currently changes in progress for leadership of advancing practice at both regional and national levels. The previous Lead of the national Centre for Advancing Practice, Prof Richard Collier, has recently retired, and our Midlands Regional Faculty Lead for Advancing Practice, Dr Julian Barratt, will be moving to a secondment as the interim Lead for the Centre for Advancing Practice for 4-days per week, whilst still providing Midlands regional advice, guidance and support for 1-day per week. On a transitional basis our HEE colleagues, Clare Sutherland (Associate Dean Interprofessional Learning), and Julia Taylor (the Faculty's Programme Lead for Advanced Practice in Primary Care) will provide leadership for the regional Faculty.

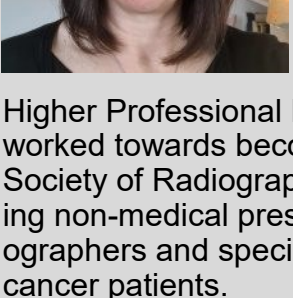
We have also been engaged in a recruitment process to appoint a colleague on a long-term internal secondment for 4-days per week as the Regional Faculty Lead for Advancing Practice in the Midlands. We are pleased to announce this appointee will be Heather Nisbet, who is the Advancing Practice Supervision and Assessment Lead in the South East Faculty for Advancing Practice. We are pleased to have Heather working with us soon in the Midlands Faculty and looking forward to our future collaboration. Heather will be continuing to work within the South East region for 1-day per week to provide ongoing advice, support and guidance from a supervision and assessment perspective.

We here in the Midlands Faculty want to extend a huge congratulations and thank you to Julian and look forward to welcoming Heather soon, below is a brief introduction from Heather.

apfac.midlands@hee.nhs.uk

www.hee.nhs.uk

We work with partners to plan, recruit, educate and train the health workforce.



I am very excited to be joining the Midlands' team as the interim Faculty Lead on a long-term secondment. I have been working as the Faculty for Advancing Practice Supervision and Assessment Lead in the South East region for just over a year.

My background is as a therapeutic radiographer which is a small, allied health profession that specialises in the delivery of radiotherapy treatment for cancer. During my long clinical career as a therapeutic radiographer in the NHS, I worked as a practice educator and completed my MSc in Higher Professional Education. After 10 years in this role, I returned to clinical practice and worked towards becoming a Consultant Therapeutic Radiographer. I was accredited with the Society of Radiographers and completed post-graduate modules in advanced practice, including non-medical prescribing. I led in the development of a team of advanced therapeutic radiographers and specialised in the management of treatment side effects and sexual care for cancer patients.

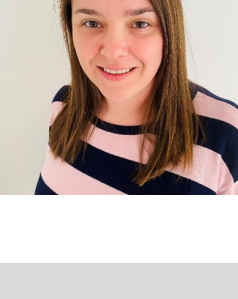
I enjoy collaborating with stakeholders and colleagues to help further the understanding of, and engagement with, governance, supervision and education for advanced practitioners. I look forward to working with the team to continue Julian's fantastic work promoting advanced practice in the Midlands' region.

Twitter: @nisbet5050

Regional Advancing Practice Supervision and Assessment Lead Appointment

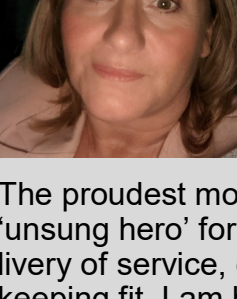
We are pleased to announce Sarah Meenan, who works at The Shrewsbury and Telford Hospital NHS Trust (SaTH), joined us at the end of June to work with the Faculty for 3-days per week as one of our Regional Advancing Practice Supervision and Assessment Leads, alongside our other Regional Advancing Practice Supervision and Assessment Lead, Karen Swift, who is already working with the Faculty for 2-days per week.

Brief introduction from Sarah: Hi, I am Sarah. I am Paediatric Advanced Clinical Practitioner working in the Midlands region. I have worked in a variety of clinical settings from General paediatrics, Accident and Emergency, ITU and Community. I have always been passionate about advanced practice since I started my advanced practice journey in Paediatric Cardiac intensive Care in 2010. I have an interest in Simulation and Human Factors and am currently undertaking a post Graduate Certificate in Human Factors for Patient Safety.



Regional Advancing Practice Administration Officer Appointment

We are also pleased to announce Candy Manders our new administration officer in the Faculty, below is a brief introduction from Candy.



During my career, I have been fortunate to experience a variety of roles including: General Assessment Administrator for the OCR Examinations Board for 10 years, Safeguarding, Referrals, Care and Support needs Officer for Adults Health and Social Care for 10 years. Personal Assistant to the Director of Education at The Children's Hospital for 3 years and training and supporting the trusts programme for all staff and newly qualified consultants, and Administrator to UK Health Security Agency, supporting Covid-19 infection control during the pandemic.

The proudest moment of my career was being nominated by members of the public as an 'unsung hero' for the Chamberlain Awards in terms of my promptness and efficiency of my delivery of service, empathy, care and discretion. In my spare time I enjoy hiking, reading, and keeping fit. I am highly passionate about career development opportunities for health and care staff and delighted to take up this position as Administration Officer.

apfac.midlands@hee.nhs.uk

www.hee.nhs.uk

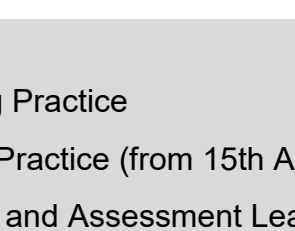
We work with partners to plan, recruit, educate and train the health workforce.

Faculty Vision and Values

The Faculty's vision is focused on: *Creating and enabling transformative partnerships to develop, embed, and sustain advanced practice education and innovation to improve patient care and outcomes across the Midlands region.*

The Faculty's work is informed by these values:

- ♦ Making a difference
- ♦ Fostering collaboration
- ♦ Working inclusively
- ♦ Acting with honesty and integrity



Midlands Advancing Practice Faculty Team

- ⇒ *Dr Julian Barratt* - Regional Faculty Lead for Advancing Practice
- ⇒ *Heather Nisbet* - Regional Faculty Lead for Advancing Practice (from 15th August)
- ⇒ *Karen Swift* and *Sarah Meenan* - Regional Supervision and Assessment Leads
- ⇒ *Rebecca McShane* - Regional Project Manager
- ⇒ *Halima Abowath* and *Harpreet Sarai* - Project Support Officers
- ⇒ *Candy Manders* - Administration Officer

Please see below a list of our Advanced Practice Training Programme Directors (TPDs) and Programme Lead:

- ⇒ *Andy Cole* - TPD for Rehabilitation ⇒ *Jane Elwell* - TPD for Urgent & Emergency Care
- ⇒ *Gemma Ford* - TPD for Mental Health ⇒ *Elizabeth Bennet Hayes* - TPD for Midwifery
- ⇒ *Jennifer Riley* - TPD for Acute Care ⇒ *Paul O'Riordan* - TPD for Imaging
- ⇒ *Julia Taylor* - Primary Care Programme Lead ⇒ *Hirminder Kaur Ubhi* - TPD for Pharmacy
- ⇒ *Luke Watson* - TPD for Musculoskeletal ⇒ *Alison Whalley* - TPD for Learning Disabilities and Autism

Thank you for reading our Update Bulletin, below are some useful links.

- ⇒ If you would like to register with us or update individual contact details please [complete this form](#).
- ⇒ For any queries or to unsubscribe from receiving our Update Bulletin please email us at apfac.midlands@hee.nhs.uk
- ⇒ You can also keep up to date with our activities, vision and values, and regional map via the [Midlands Advanced Practice webpage](#) and activities of the Centre for Advancing Practice via their webpage.



apfac.midlands@hee.nhs.uk

www.hee.nhs.uk

We work with partners to plan, recruit, educate and train the health workforce.